

I Am Romantically Scattering My Own Ashes

Tech Rider



Contact:

Chief Technician

Vašek Hruška

vasek.hruska@studiohrdinu.cz

+420 776 194 409

Sound

Matěj Šenkyřík

senkyrikmatej@gmail.com

+420 777 801 196

Lighting

Vojta Tomášek

vojta.tomasek12@gmail.com

+420 731 173 747

Video

Honza Štulo

janpulo@gmail.com

+420 724 244 551

Production

Madla Horáková Zelenková

madla.zelenkova@studiohrdinu.cz

+420 775 290 483

Length: 70 min
Set-up: 8h
Rehearsal, shooting of videos: 3h
Set-down: 2-3h

Stage dimensions (m):
Optimal (D/W/H): 14/15/5.5
Minimal (D/W/H): 12/12/5.5

| | |
|----------------------|--------------------|
| Company technicians: | House technicians: |
| Technician: 4 | Technician: 2 |
| Lighting: 1 | Lighting: 1 |
| Sound: 1 | Sound: 1 |
| Video: 1 | Video: 1 |

The number of technicians is heavily dependent on the space. We will expect maximum co-operation.

Printed photographs will be placed around the auditorium and foyer.

There are four actors and one technician on stage.

Photos and videos of the actors on stage are used during the performance. These will have to be taken during the rehearsal.

Actors enter the stage from both the left and the right sides.

There are objects on stage that might limit visibility if you have an elevated stage.

We normally use our auditorium chairs as a part of the set. We will see if we bring ours or use yours.

Some pieces of the set are quite big. (e.g. a steel frame 3x2m with wheels sticking out) If the entrance to your stage might be problematic, please let us know.

The Set:

Grey back wall/schaufolie (open for discussion)

Grey floor/grey ballet floor (will depend on your back wall/schaufolie)

Podium:

There is a small podium made out of stage elements at the back of the stage. The fronts are covered.

Back row: 3x1m, height 25cm

front row: 3x1m height 50cm



Balcony:

There is a concrete balcony in our theatre, stage right. It is used during the show (actors go there using a ladder).

If there is nothing suitable in your theatre, we can build a balcony from pipes and stage elements.



Hanging frames:

Two Steel frames hang from the ceiling. One is a projection screen (see the photo of the podium, 40kg)

The other one has a plexi-glass attached (90kg):



A third steel frame is on wheels.

Sound

The sound man needs to hear the PA clearly. The FOH cannot be placed behind glass walls, on top balconies or such. Thank you.

4-channel system + sub.

(1-left front, 2-right front, 3-left back, 4-right back).

Sub = mono sum of LR front

Preferred mixing desk:

Allen&Heath SQ-5

Microphones:

1x Wireless Handheld mic

3x Wireless Headset (not used as a headset, but to gather sound from small tables on stage)

3x Condenser “pencil” mic

1x boom mic stand

4 inputs from computer (FOH)

2 of the condenser mics hang from the ceiling at very specific spots, the third one is on the boom stand

Projection

There are two projectors.

One is hung from the ceiling near the back of the stage (min 5000 Ansi), the other one is on the ground, front stage (min 4500 Ansi).

The ceiling projector is connected to the FOH and requires a DMX shutter, the one on the ground is connected directly to a camera on stage and the actors shutter it using a manual shutter.

Ideally, the video is controlled from the Lighting FOH.

Lighting

GrandMA2 Lighting console / onPC system (3.8.0 or higher)

41 dimmer channels (2.4kW/channel),
13 of them on the ground, 7 on the front, 21 above the stage.
DMX connection on stage (dimnable fluorescents)
DMX connection above the stage (DMX shutter)

8x PC 2kW + barndoors
11x PC 1kW + barndoors
2x PC 0.5kW + barndoors
1x ETC SourceFour jr. 25°-50°
2x ETC SourceFour 50°
2x ETC SourceFour 26°
1x ETC SourceFour 36°
5x Asymmetrical flood 1kW
4x Symmetrical flood 1kW
3x PAR 64 CP61
1x PAR 64 CP62
DMX Shutter
Dimmable audience light controllable via DMX

4x Stand
1x Stand on wheels
5x Floor stand

The company brings:
3x Tablelamp
2x Dimmable fluorescent

The actors operate a profiler on a stand on wheels on stage.

We will bring the gels. Please provide the sizes of your gel frames, so we can bring enough and pre-cut.

Studio Hrdinů -

RRVP

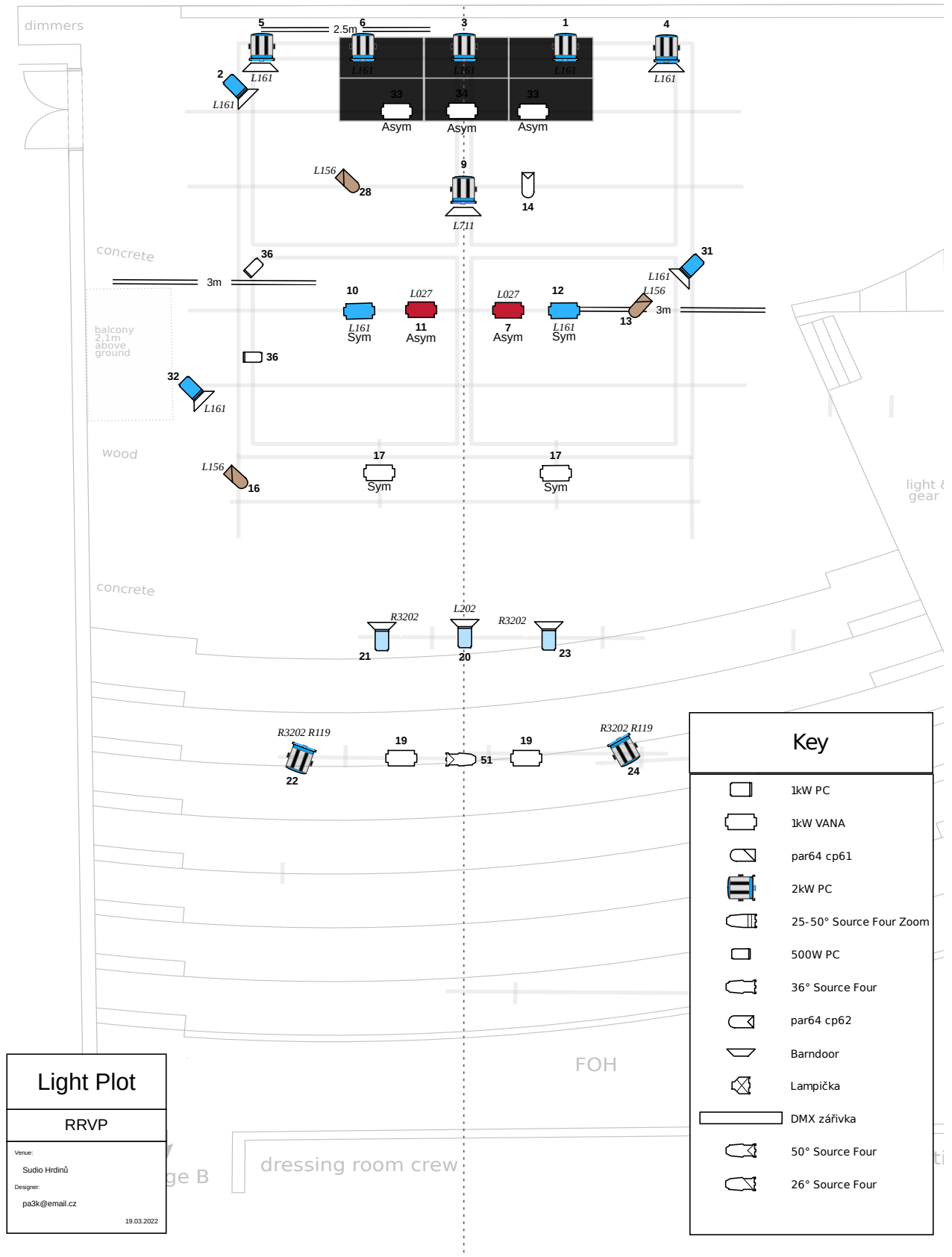


Lightplot Ground

Studio Hrdinů – ...Ashes – Tech Rider 9/10

Studio Hrdinů -

RRVP



Lightplot Ceiling

Studio Hrdinů – ...Ashes – Tech Rider 10/10